

Tools Needed:



T #1



T #2



T #3



Step #1 remove fin fan from box



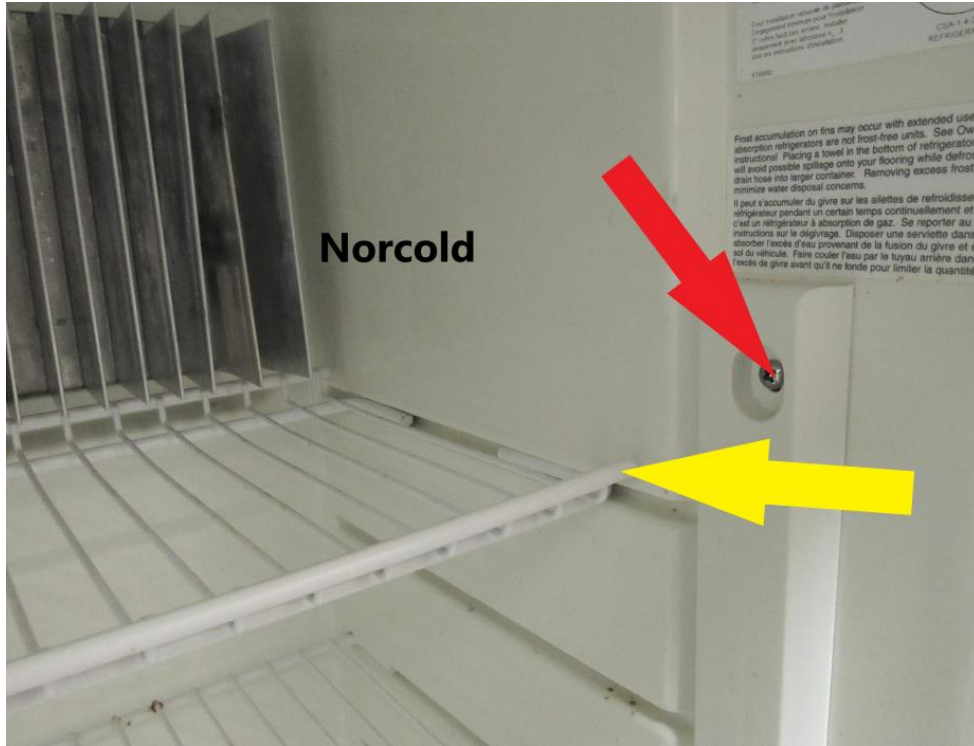
Step #2 snip zip tie on bag (RA) and remove fin fan gently



#3 inspect to make sure everything is intact



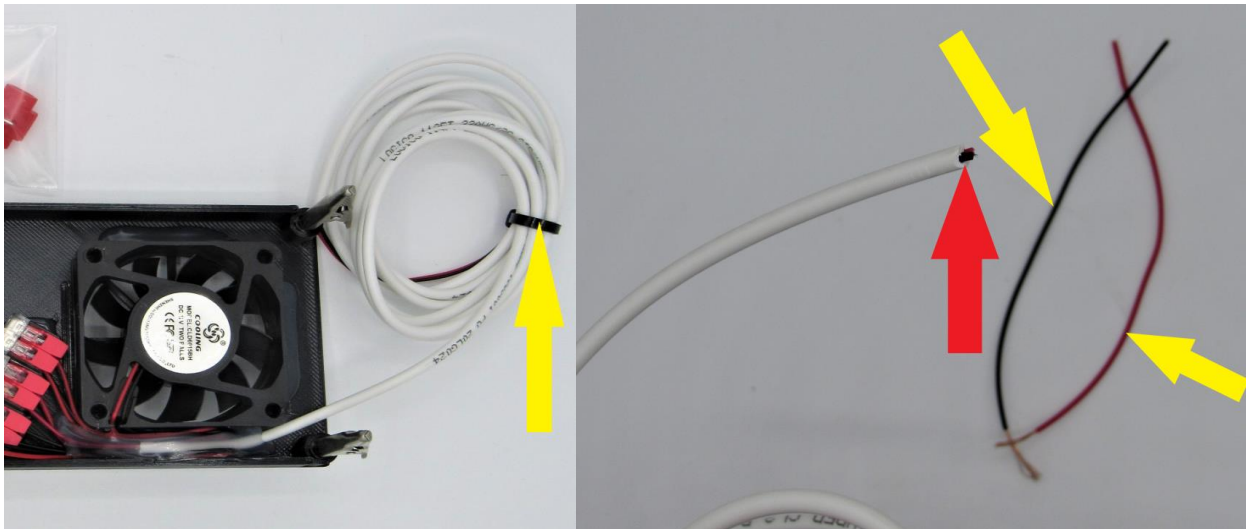
#4 Hook up procedures: (Norcold) remove top shelf (YA) on some Norcolds trim pcs will have to be removed in order to remove shelf (RA). (Dometic) shelves can stay in place



#5 slide defrost tray out, variations in tray size and configurations dependent on models



#6 snip zip tie on fin fan wire (YA), cut off (RA) the end wires (YA) end wires can be thrown away



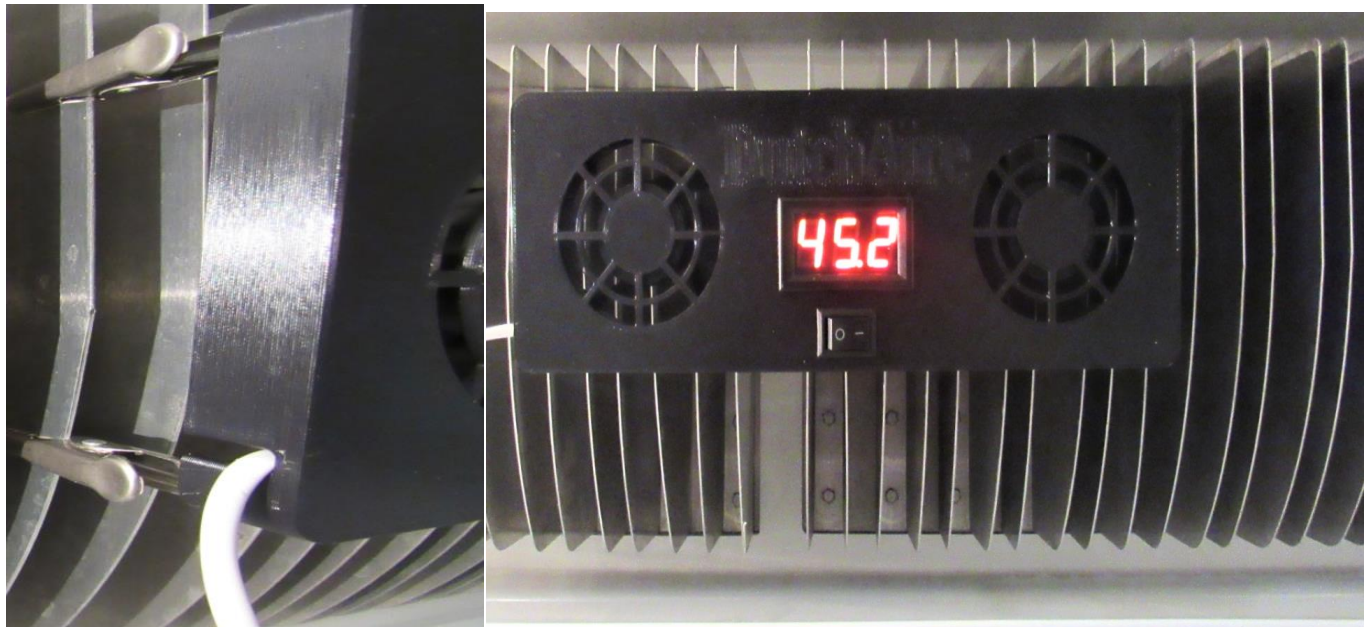
#7 make sure the exterior end of the hose is clear and, on some models, it will have a small plug that needs to be taken off, and then just left off.



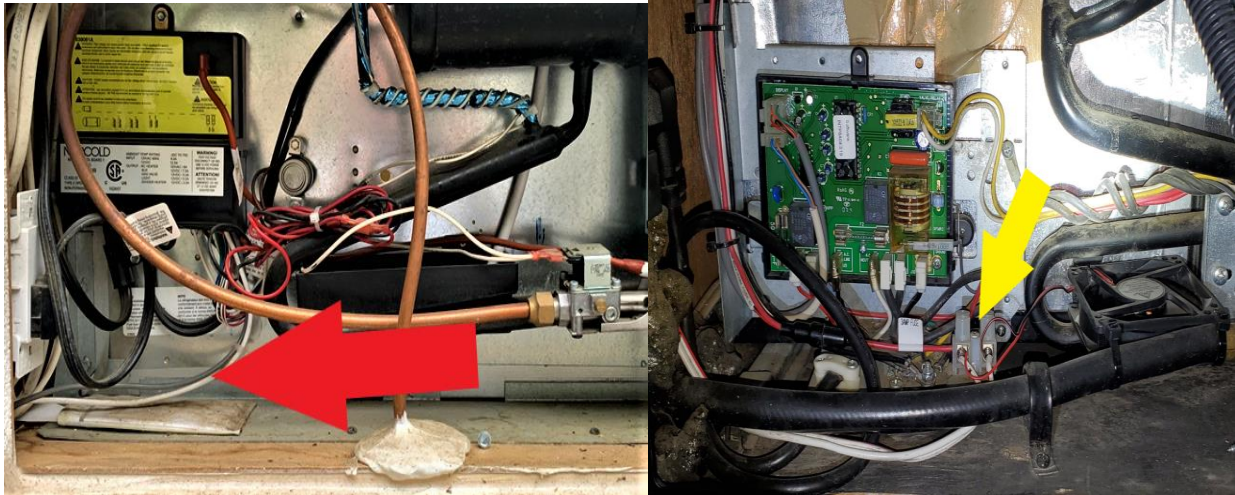
#8 Insert the end of the wire thru the defrost tray hole (RA) first then push most of the wire thru the defrost hose (YA) going out the back to the outside. It helps to have someone on the outside shaking the defrost hose to get the wire to push thru. Some variations on defrost hose sizes. Some Dometics will have a defrost cup under the tray, so the wire does not go thru tray in this setting, but only gets pushed out thru the cup attached to the hose. (BA)



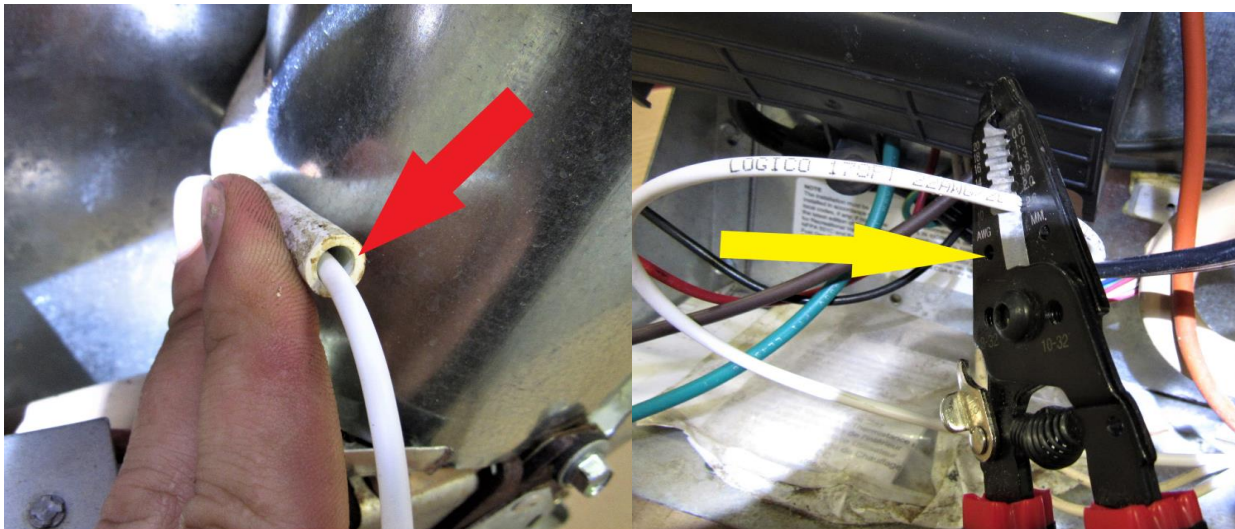
#9 Attach Fin Fan to aluminum fin by pushing in the stainless-steel clips on both sides of the fan housing and clipping them onto the fin, most fridges will start to cool towards the right side, the fan should be clipped towards the right side or wherever your frost problem area is.



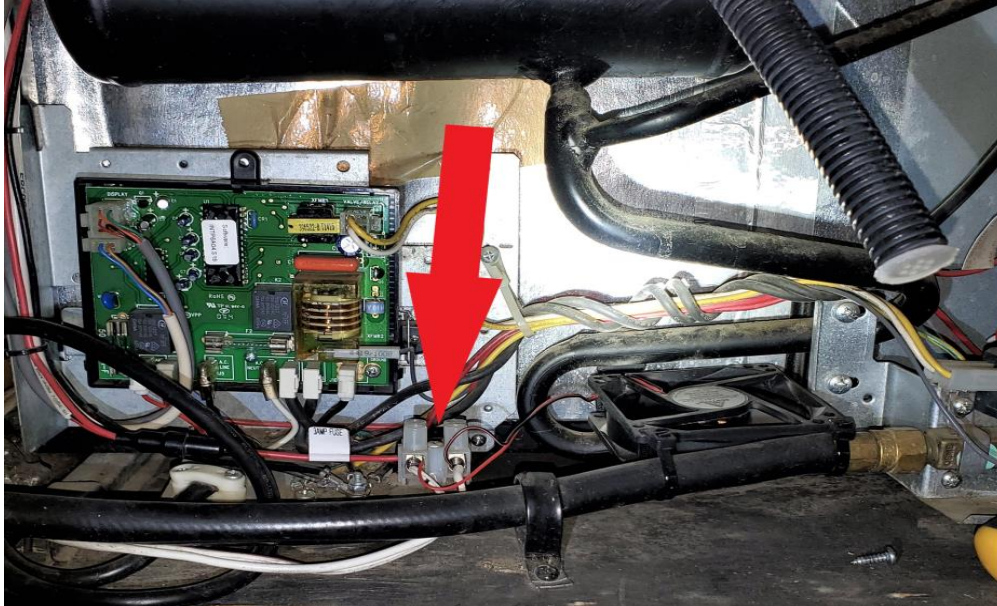
#10 going to the back side of the fridge, find your 12V wires coming from your coach going to your control board, make sure you are aware of which one is the 12V positive and which one is 12V ground. Wire colors and wire hookup will vary from coach to coach. (RA) (YA)



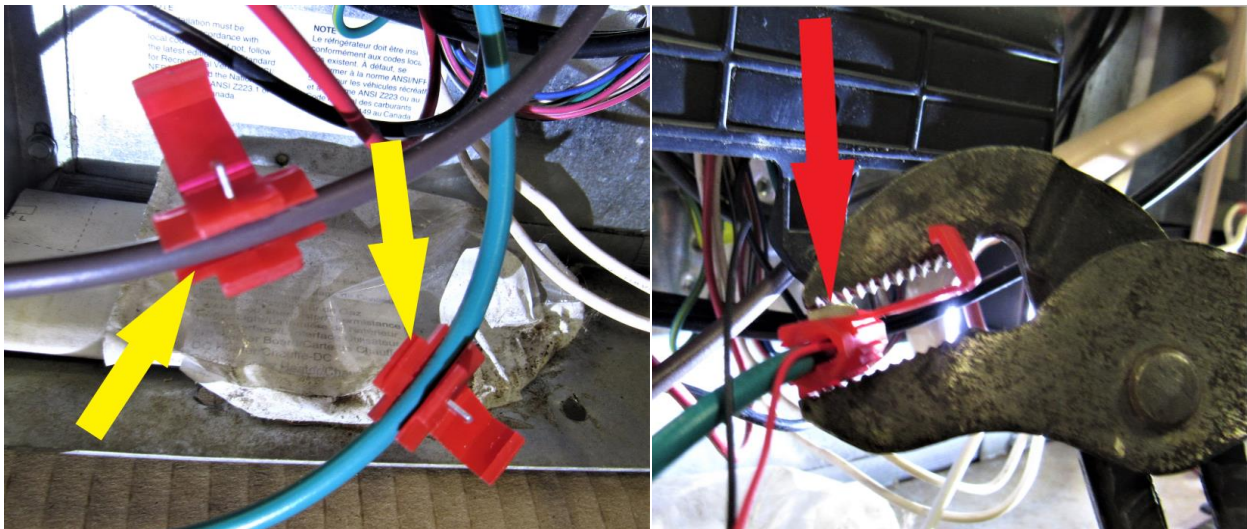
#11 this is what it should look like coming out of your defrost hose (RA), strip back the end again using the wire stripper (YA)



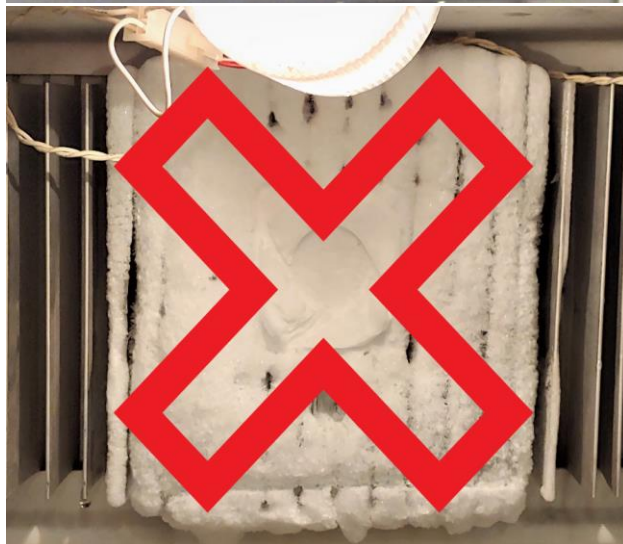
#12 if your fridge is a Dometic you can find this wire hookup and loosen the 12V wires using a flat screwdriver and then adding the fin fan wire making sure to put red to positive and black to ground (RA)



#13 if your fridge is a Norcold you will need to use the scotch locks (YA) included and attach fin fan wire to your coach 12V power wires making sure to put red wire to positive and black wire to ground, use pliers to crimp down connector after fin fan wires have been pushed into place (RA) remember wire colors vary, so make sure you are aware which is your + -



#14 now your fin fan is wired and should have power to your fan, thermometer, turn your fan on using the manual fan switch (YA), (0 is off – is on) this fan will make your fridge run more efficient plus will keep your ice melted off. The thermometer will give you instant temps inside your fridge, but if you use this for your main thermometer then beware that this temp will start to climb once the door is opened to long. Airflow is in towards the fin in order to remove all ice and cold from fins.



Need more quality fridge parts or accessories? Look us up at

www.jc-refrigeration.com